

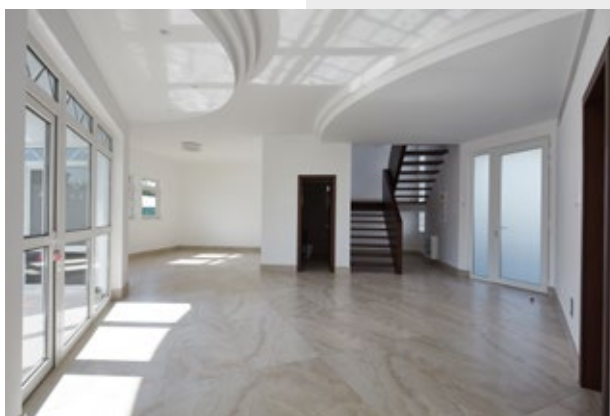


REEM I

JUMEIRAH 2, DUBAI



صديقي للعقارات
SEDDIQI PROPERTIES



A GATEWAY TO LEISURELY LIVING

Nestled in the heart of Jumeirah 2 in a secure gated community, REEM I comprises 17 villas that enjoy easy access to recreational and dining hotspots such as Box Park, Al Wasl Road and Jumeirah Second Open Beach.

The community hosts a collection of three- and four-bedroom spacious properties, all featuring a study, an external maid's room, and a private garden. From space saving built-in wardrobes, to fully fitted and equipped kitchens, REEM I is home to family living. Shared facilities include a tennis court, landscaped areas and a newly refurbished swimming pool with shaded areas, providing a leisurely retreat in the heart of the city.

The round the clock security and maintenance, as well as the landscaping and water charges included as part of the rent, allows residents to enjoy the safe and peaceful community without compromising on accessibility to the city's exciting offerings.

OVERVIEW OF PROPERTY AMENITIES & LANDMARK INFO

Property Amenities

- Shared temperature controlled swimming pool
- Private garden
- Tennis court
- Fully fitted kitchen
- Covered parking for 2 cars
- 24/7 on-site security
- 24/7 maintenance helpdesk support
- Pet friendly property*

*T&Cs apply

Included in the rent

- Maintenance
- Water
- Managed by Seddiqi Properties

Proximity to Landmarks

- Easy access to schools, hospitals, mosques, restaurant, parks and beaches
- Conveniently located within proximity to Box Park, Four Seasons Hotel, Jumeirah Post Office, Jumeirah Second Open Beach and Jumeirah Archaeological Site



FLOOR PLANS

TYPE 3A

3 bedrooms + maid's room duplex villas in Reem I with a community view of Jumeirah 2

Floor Plan Type 3A

- 3 bedrooms + maid's room
- Size: 2,690 sqft
- Villas: 1-5 & 11-17

Overview of unit

- 3 bedrooms
- 2 bathrooms

Ground Floor

- Large living and dining area
- Large closed kitchen
- Guest toilet
- External en suite maid's room with built-in wardrobe
- Private garden
- Covered parking for 2 cars

1st Floor

- Living area
- Large en suite master bedroom with built-in wardrobe
- 2nd and 3rd bedroom with built-in wardrobe
- Shared bathroom
- Balcony access from master bedroom and 2nd bedroom
- Terrace access from the living area

Appliances

- Fridge
- Cooker and cooker hood
- Microwave
- Dishwasher
- Washing machine
- Dryer



TYPE 4A

4 bedrooms + maid's room duplex villas in Reem I with a community view of Jumeirah 2

Floor Plan Type 4A

- 4 bedroom + maid's room
- Size: 3,874 sqft
- Villas: 6-10

Overview of unit

- 4 bedrooms
- 4 bathrooms

Ground Floor

- Large living and dining area
- Large closed kitchen
- Large Laundry room
- Study room
- Guest toilet
- External en suite maid's room with built-in wardrobe
- Private garden
- Covered parking for 2 cars

1st Floor

- Living area
- Large en suite master bedroom with built-in wardrobe
- 2nd bedroom with ensuite bathroom and built-in wardrobe
- 3rd and 4th bedroom with built-in wardrobe
- Shared bathroom
- Balcony access from master bedroom and 4th bedroom
- Terrace access from the living area

Appliances

- Fridge
- Cooker and cooker hood
- Microwave
- Dishwasher
- Washing Machine
- Dryer





DOCUMENTS & PAYMENT INFORMATION

Leasing Documents and Payment Details:

- Payable up to 12 cheques*
- Booking form
- Passport, visa & EID of all occupants
- Salary certificate
- Marriage certificate (for couples)

*T&Cs apply

Fee:

- Rental amount (divided equally into number of cheques)
- Security Deposit - 5% of annual rent or /minimum AED 5,000
- Ejari Fee – AED 210

Contact Information:

 800 SPROP (77767)

 info@seddiqproperties.com

 seddiqproperties.com

 [@seddiqproperties](https://www.instagram.com/seddiqproperties)

 facebook.com/seddiqproperties