

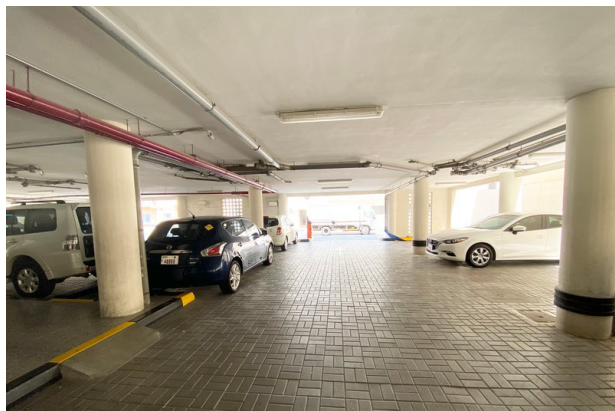
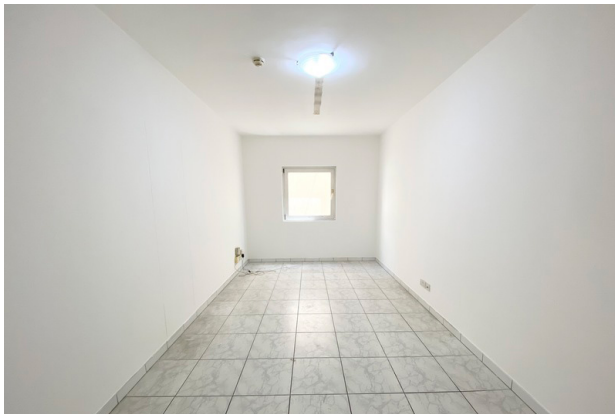


## OMEGA

HAMRIYA, DUBAI



صديقي للعقارات  
SEDDIQI PROPERTIES



## YOUR SOLUTION TO LONG TERM LIVING

For almost three decades, Omega has been the home of choice for many. Located in the lively neighbourhood of Al Hamriya, well-connected to nearby shops and services, residents can enjoy 24-hour access to the best the city has to offer.

The collection of 30 one- and two-bedroom apartments in the well-maintained building offer shaded parking spaces. Benefitting from onsite security and 24/7 maintenance helpdesk assistance, residents can relax with the confidence that their needs are taken care of.

Convenient metro access via Al Fahidi Metro Station which is a short 10-minute walk, while landmarks such as Burjuman Centre, Al Fahidi Souk and Dubai Creek are all within easy reach.

## OVERVIEW OF PROPERTY AMENITIES & LANDMARK INFO

### Building Amenities

- Covered parking
- 24/7 on-site security
- 24/7 maintenance helpdesk support
- Pet friendly property\*

\*T&Cs apply

### Included in the rent

- Maintenance
- Managed by Seddiqi Properties

### Proximity to Landmarks

- Easy access to Malls, Museums, Hotels, Mosques, Embassies, Public Transportation, and Restaurants
- Conveniently located and within proximity to Burjuman Center, Al Fahidi Souk & Dubai Creek and 10 minutes' walk from Al Fahidi Metro Station



# FLOOR PLANS

---

## ONE BEDROOM (TYPE 1A)

1 bedroom apartment in Omega Building with a community view of the Hamriya area in Dubai

### Floor Plan Type 1A

- 1 bedroom
- Size: 500 sqft
- Floor: 1, 2 & 3
- Series: 01, 05, 06 and 10

### Overview of unit

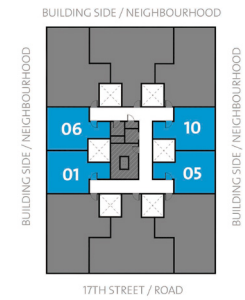
- 1 bedroom
- 1 bathrooms
- Bedroom with built-in wardrobe
- Living & dining area
- Closed kitchen

### Built in appliances

- Cooker hood



1ST TO 3RD FLOOR



## ONE BEDROOM (TYPE 2A)

2 bedrooms corner apartment in Omega Building with a community view of the Hamriya area in Dubai

### Floor Plan Type 2A

- 2 bedrooms
- Size: 800 sqft
- Floor: 02, 04, 07 & 09

### Overview of unit

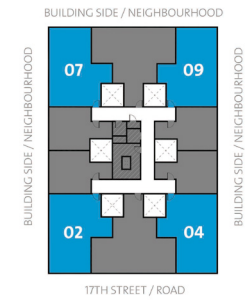
- 2 bedrooms
- 2 bathrooms
- Bedrooms with built-in wardrobe
- Living & dining area
- Closed kitchen

### Built in appliances

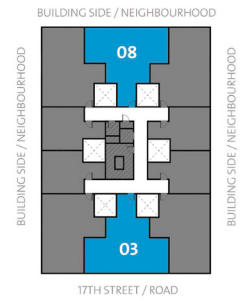
- Cooker hood



1ST TO 3RD FLOOR



1ST TO 3RD FLOOR



## ONE BEDROOM (TYPE 2B)

2 bedrooms middle apartment in Omega Building with a community view of the Hamriya area in Dubai

### Floor Plan Type 2B

- 2 bedrooms
- Size: 800 sqft
- Floor: 03 & 08

### Overview of unit

- 2 bedrooms
- 2 bathrooms
- Bedrooms with built-in wardrobe
- Living & dining area
- Closed kitchen

### Built in appliances

- Cooker hood





## DOCUMENTS & PAYMENT INFORMATION

### Leasing Documents and Payment Details:

- Payable up to 12 Cheques\*
- Booking Form
- Passport, Visa & EID of all occupants
- Salary Certificate
- Marriage Certificate (for couples)

\* T&Cs apply

### Fee:

- Rental amount (divided equally into number of cheques)
- Security Deposit - 5% of annual rent or minimum AED 3,000
- Ejari Fee – AED 210



**Contact Information:**

 800 SPROP (77767)

 [info@seddiqproperties.com](mailto:info@seddiqproperties.com)

 [seddiqproperties.com](http://seddiqproperties.com)

 [@seddiqproperties](https://www.instagram.com/seddiqproperties)

 [facebook.com/seddiqproperties](https://www.facebook.com/seddiqproperties)